



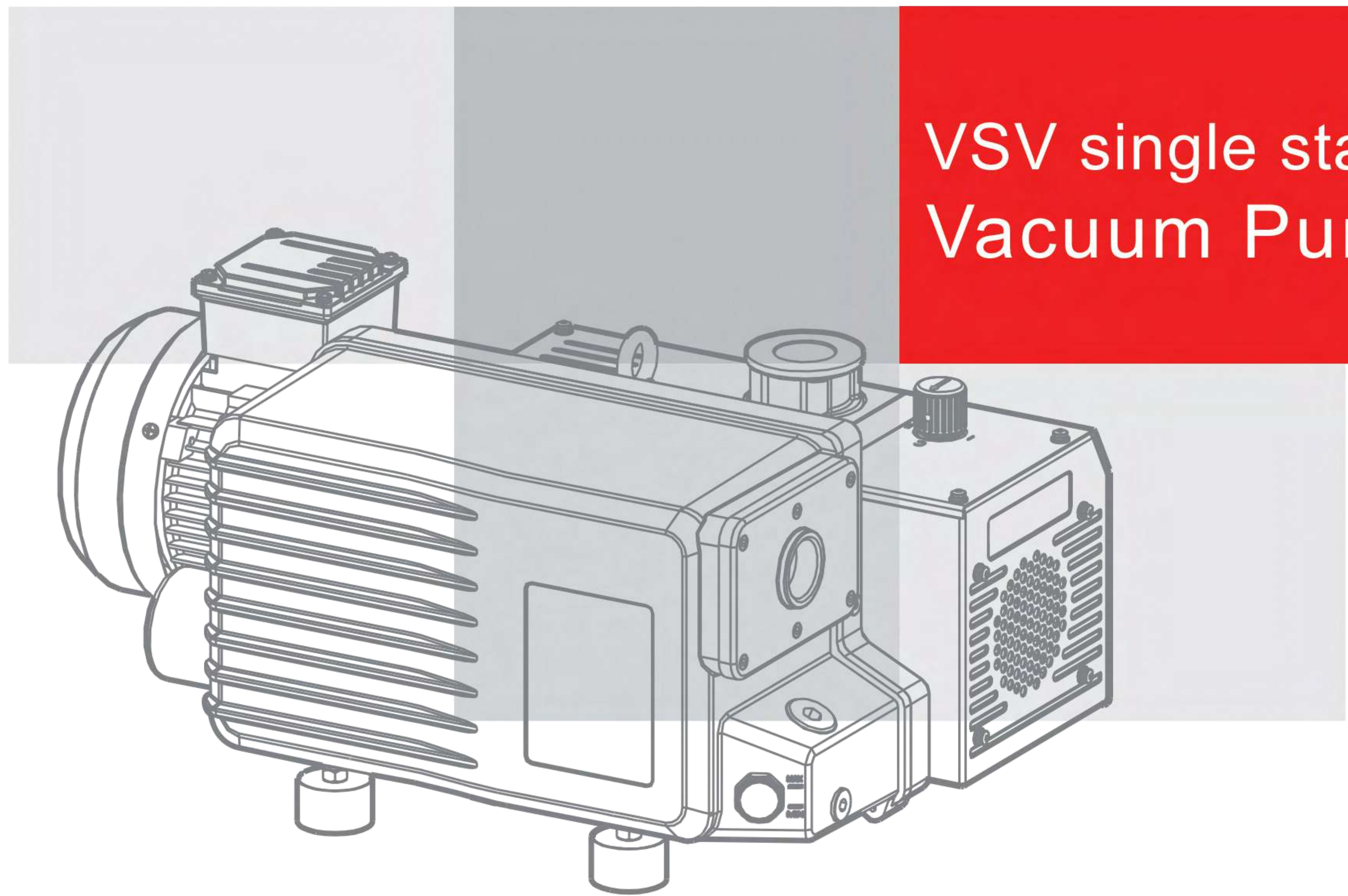
ROTARY VANE

Vacuum Pumps



High Reliability High Vacuum

FLO-MAX	
3 PHASE INDUCTION MOTOR	
Model	Y90-4
Rated output	1.1 Kw/4 Poles
Rated voltage	380V/50HZ
Rated current	3A
Rated speed	1440RPM
Warranty	3 Years



VSV single stage Vacuum Pump

Meeting All Your Needs



Wind Energy



Solar



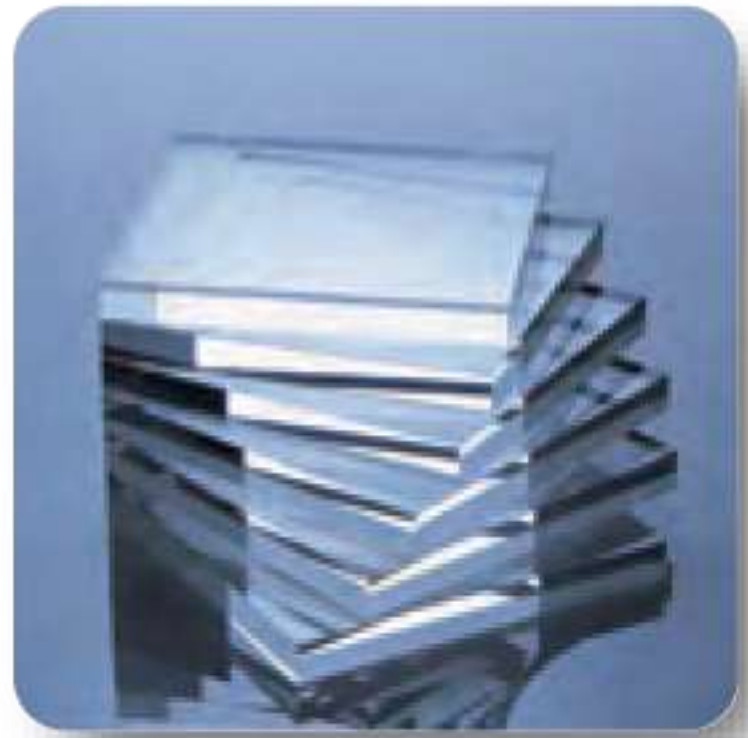
Oil and Gas



Electric Power Engineering



Automotive & Transport



Glass



Space and Aeronautics



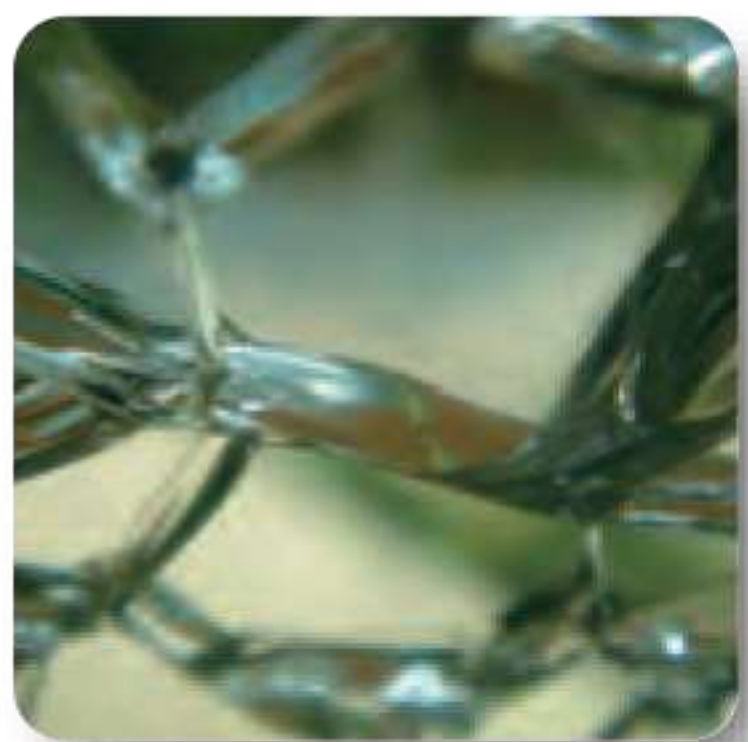
Plastic and Rubber



Analytics & Laboratory



Battery



Vulcanization



Medical & Hospitals



Filter Press



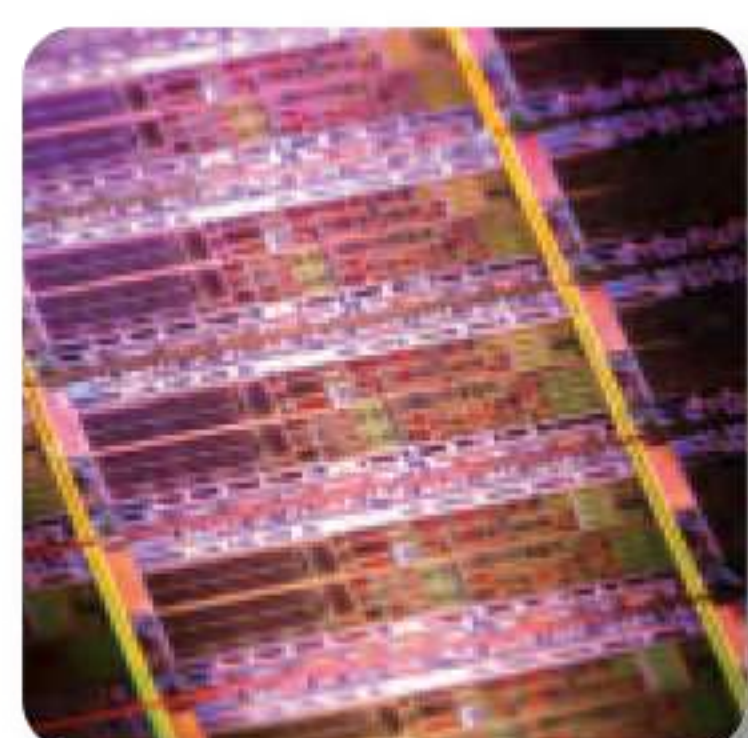
Machine Building



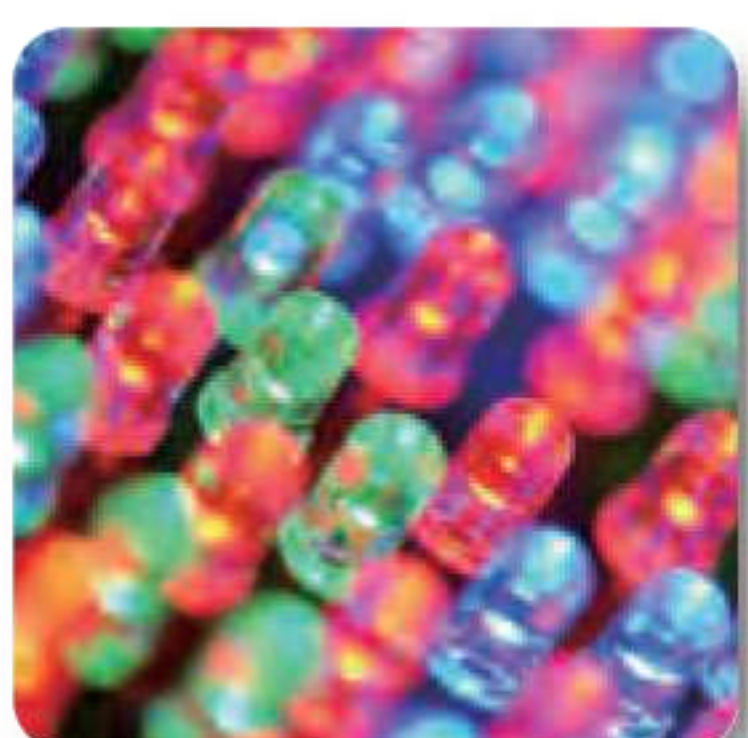
Waste Management



Metallurgical Industry



Semiconductor



LED



Printing



Wood Industry



Lifting



Vacuum Packaging



Film Plating



Surface Technology



Vacuum Forming



Integrated anti-suckback valve



Gas ballast helps to evacuate more vapor



German-made oil seal effectively prevents oil leakage



High quality oil mist filters contribute to avoid oil exhaust and get a longer service life



VSV Single Stage Vacuum Pump

Full application of vacuum technology

Vacuum technology plays critical role in industrial field. We always follow closely the application of vacuum pump in different industries and know what our customers most concern: good at pumping certain condensable gas, no oil exhaust or oil leakage, no emulsification of pump oil, guarantee of high reliability...

Rotary Vane Vacuum Pump

VSV-020



- High efficient oil mist filters contribute to solve the issues of oil exhaust and smoking as well as prolong the service life.
- Sealing parts are made from fluororubber, which improved the performance of anti-corrosion and solved oil leakage issues.
- Horizontal CNC machining of Japanese Mori Seiki guarantees high reliability.
- Unique industrial design generated elegant appearance.
- Integrated design of pump and motor made the product lighter and smaller.

Specifications

Model		VSV-020	
Displacement speed	m ³ /h	20	
Ultimate pressure	Without gas ballast	m bar	/
Ultimate total pressure	With gas ballast I	m bar	≤0.5
	With gas ballast II	m bar	/
Water vapor tolerance	With gas ballast I	m bar	15
	With gas ballast II	m bar	/
Noise level	dB	≤65	
Power supply		Single/Three-Ph	
Power rating	kW	0.75	
Motor speed (50/60Hz)	rpm	3000/3600	
Ambient temperature	°C	10 - 40	
Oil capacity	L	0.5	
Level of protection		/	
Intake and exhaust		G3/4"	
Weight	Kg	19.5	
Dimension (L*W*H)	m m	317×249×219	

Rotary Vane Vacuum Pump

VSV-022/028



- High efficient oil mist filters contribute to solve the issues of oil exhaust and smoking as well as prolong the service life.
- Sealing parts are made from fluororubber, which improved the performance of anti-corrosion and solved oil leakage issues.
- Multiple shifts design for gas ballast to meet customers' demand of ultimate vacuum and capability of vapor evacuation.
- Horizontal CNC machining of Japanese Mori Seiki guarantees high reliability.
- Unique industrial design generated elegant appearance.

Specifications

Model		VSV-022	
Displacement speed	m ³ /h	22	
Ultimate pressure	Without gas ballast	m bar	≤0.2
Ultimate total pressure	With gas ballast I	m bar	≤0.5
	With gas ballast II	m bar	≤1.5
Water vapor tolerance	With gas ballast I	m bar	15
	With gas ballast II	m bar	30
Noise level	dB	≤58	
Power supply		Single/Three-Ph	
Power rating	kW	1.1	
Motor speed (50/60Hz)	rpm	1440/1720	
Ambient temperature	°C	10 - 40	
Oil capacity	L	1	
Level of protection		IP54	
Intake and exhaust		G3/4"	
Weight	Kg	30	
Dimension (L*W*H)	m m	496×268×248	

Specifications

Model		VSV-028	
Displacement speed	m ³ /h	28	
Ultimate pressure	Without gas ballast	m bar	≤0.2
Ultimate total pressure	With gas ballast I	m bar	≤0.5
	With gas ballast II	m bar	≤1.5
Water vapor tolerance	With gas ballast I	m bar	15
	With gas ballast II	m bar	30
Noise level	dB	≤58	
Power supply		Single/Three-Ph	
Power rating	kW	1.1	
Motor speed (50/60Hz)	rpm	1440/1720	
Ambient temperature	°C	10 - 40	
Oil capacity	L	1	
Level of protection		IP54	
Intake and exhaust		G3/4"	
Weight	Kg	30	
Dimension (L*W*H)	m m	496×268×248	

Rotary Vane Vacuum Pump

VSV-040/065



- High efficient oil mist filters contribute to solve the issues of oil exhaust and smoking as well as prolong the service life.
- Sealing parts are made from fluororubber, which improved the performance of anti-corrosion and solved oil leakage issues.
- Multiple shifts design for gas ballast to meet customers' demand of ultimate vacuum and capability of vapor evacuation.
- Horizontal CNC machining of Japanese Mori Seiki guarantees high reliability.
- Unique industrial design generated elegant appearance.
- Integrated design of pump and motor made the product lighter and smaller.

Specifications

Model		VSV-040	
Displacement speed	m ³ /h	40	
Ultimate pressure	Without gas ballast	m bar	≤0.3
Ultimate total pressure	With gas ballast I	m bar	≤0.5
	With gas ballast II	m bar	≤1.5
Water vapor tolerance	With gas ballast I	m bar	15
	With gas ballast II	m bar	30
Noise level	dB	≤59	
Power supply	Three-Phase		
Power rating	kW	1.1	
Motor speed (50/60Hz)	rpm	1440/1720	
Ambient temperature	°C	10 - 40	
Oil capacity	L	2	
Level of protection	IP54		
Intake and exhaust	G1 ¼"		
Weight	Kg	39.2	
Dimension (L*W*H)	m m	555×304×268	

Specifications

Model		VSV-065	
Displacement speed	m ³ /h	65	
Ultimate pressure	Without gas ballast	m bar	≤0.3
Ultimate total pressure	With gas ballast I	m bar	≤0.5
	With gas ballast II	m bar	≤1.5
Water vapor tolerance	With gas ballast I	m bar	15
	With gas ballast II	m bar	30
Noise level	dB	≤61	
Power supply	Three-Phase		
Power rating	kW	1.5	
Motor speed (50/60Hz)	rpm	1440/1720	
Ambient temperature	°C	10 - 40	
Oil capacity	L	2	
Level of protection	IP54		
Intake and exhaust	G1 ¼"		
Weight	Kg	42.5	
Dimension (L*W*H)	m m	555×311×268	

Rotary Vane Vacuum Pump

VSV-100



- High efficient oil mist filters contribute to solve the issues of oil exhaust and smoking as well as prolong the service life.
- Sealing parts are made from fluororubber, which improved the performance of anti-corrosion and solved oil leakage issues.
- Multiple shifts design for gas ballast to meet customers' demand of ultimate vacuum and capability of vapor evacuation.
- Horizontal CNC machining of Japanese Mori Seiki guarantees high reliability.
- Unique industrial design generated elegant appearance.

Specifications

Model		VSV-100	
Displacement speed	m ³ /h	100	
Ultimate pressure	Without gas ballast	m bar	≤0.3
Ultimate total pressure	With gas ballast I	m bar	≤0.5
	With gas ballast II	m bar	≤1.5
Water vapor tolerance	With gas ballast I	m bar	15
	With gas ballast II	m bar	30
Noise level	dB	≤62	
Power supply	Three-Phase		
Power rating	kW	2.2	
Motor speed (50/60Hz)	rpm	1440/1720	
Ambient temperature	°C	10 - 40	
Oil capacity	L	2	
Level of protection	IP54		
Intake and exhaust	G1 ¼"		
Weight	Kg	72	
Dimension (L*W*H)	m m	703×406×286	

Rotary Vane Vacuum Pump

VSV-160/200



- High efficient oil mist filters contribute to solve the issues of oil exhaust and smoking as well as prolong the service life.
- Sealing parts are made from fluororubber, which improved the performance of anti-corrosion and solved oil leakage issues.
- Multiple shifts design for gas ballast to meet customers' demand of ultimate vacuum and capability of vapor evacuation.
- Horizontal CNC machining of Japanese Mori Seiki guarantees high reliability.
- Unique industrial design generated elegant appearance.

Specifications

Model		VSV-160	
Displacement speed	m ³ /h	160	
Ultimate pressure	Without gas ballast	m bar	≤8×10 ⁻²
Ultimate total pressure	With gas ballast I	m bar	≤0.5
	With gas ballast II	m bar	≤1.5
Water vapor tolerance	With gas ballast I	m bar	30
	With gas ballast II	m bar	50
Noise level	dB	≤70	
Power supply	Three-Phase		
Power rating	kW	4	
Motor speed (50/60Hz)	rpm	1440/1720	
Ambient temperature	°C	10 - 40	
Oil capacity	L	5~7	
Level of protection	IP54		
Intake and exhaust	G2"		
Weight	Kg	132	
Dimension (L*W*H)	m m	930×533×436	

Specifications

Model		VSV-200	
Displacement speed	m ³ /h	200	
Ultimate pressure	Without gas ballast	m bar	≤8×10 ⁻²
Ultimate total pressure	With gas ballast I	m bar	≤0.5
	With gas ballast II	m bar	≤1.5
Water vapor tolerance	With gas ballast I	m bar	30
	With gas ballast II	m bar	50
Noise level	dB	≤70	
Power supply	Three-Phase		
Power rating	kW	4	
Motor speed (50/60Hz)	rpm	1440/1720	
Ambient temperature	°C	10 - 40	
Oil capacity	L	5~7	
Level of protection	IP54		
Intake and exhaust	G2"		
Weight	Kg	132	
Dimension (L*W*H)	m m	930×533×436	

Rotary Vane Vacuum Pump

VSV-300

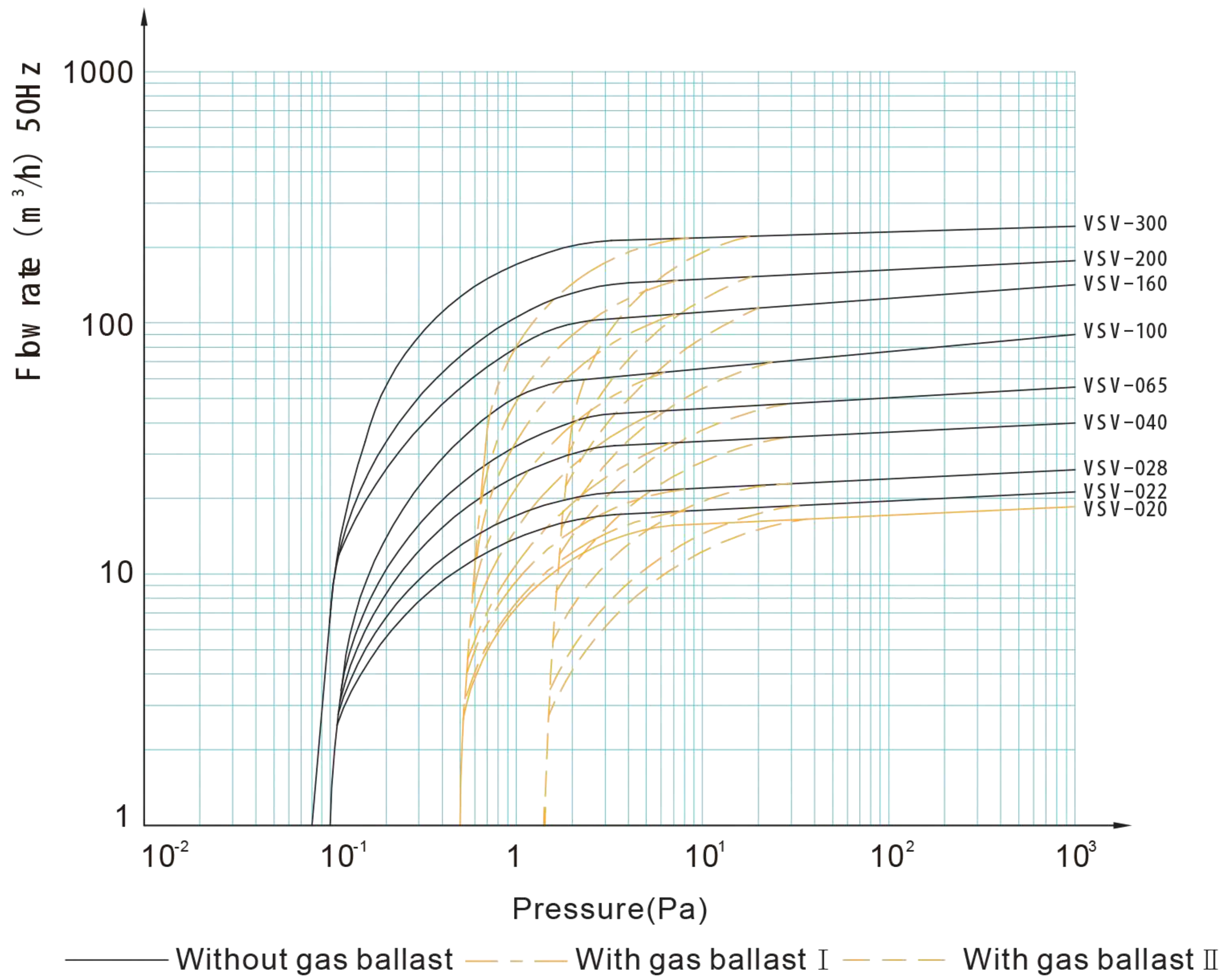


- High efficient oil mist filters contribute to solve the issues of oil exhaust and smoking as well as prolong the service life.
- Sealing parts are made from fluororubber, which improved the performance of anti-corrosion and solved oil leakage issues.
- Multiple shifts design for gas ballast to meet customers' demand of ultimate vacuum and capability of vapor evacuation.
- Horizontal CNC machining of Japanese Mori Seiki guarantees high reliability.

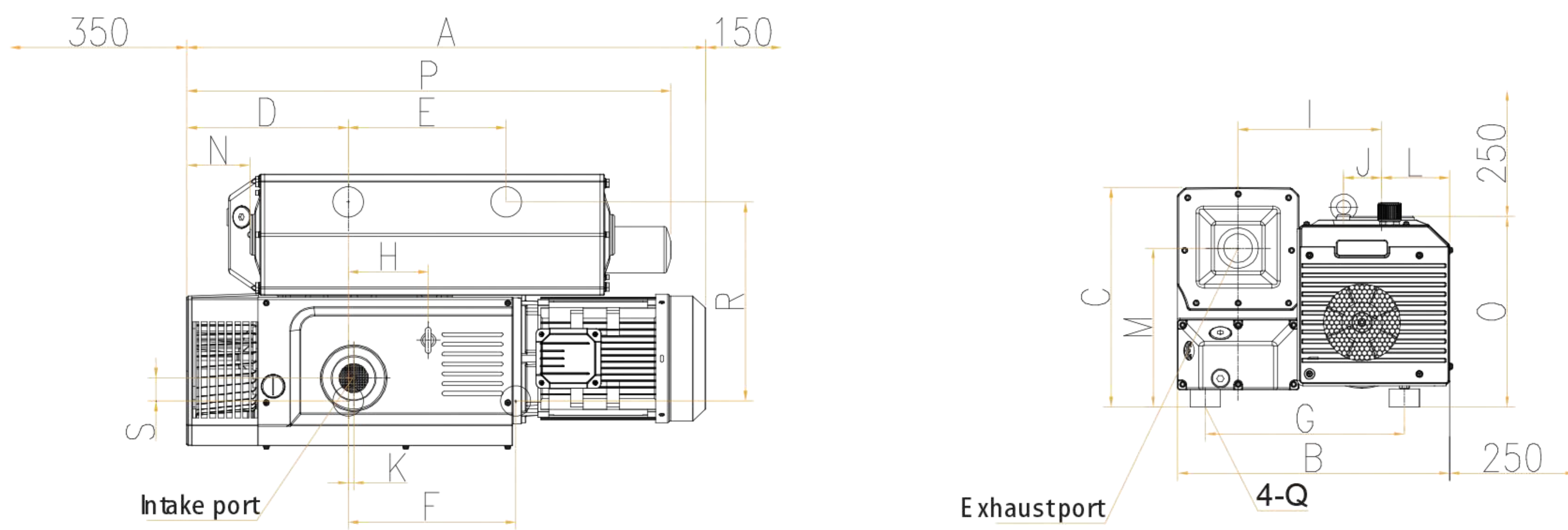
Specifications

Model		VSV-300	
Displacement speed	m ³ /h	300	
Ultimate pressure	Without gas ballast	m bar	≤8×10 ⁻²
Ultimate total pressure	With gas ballast I	m bar	≤0.5
	With gas ballast II	m bar	≤1.5
Water vapor tolerance	With gas ballast I	m bar	30
	With gas ballast II	m bar	50
Noise level	dB	≤71	
Power supply	Three-Phase		
Power rating	kW	5.5	
Motor speed (50/60Hz)	rpm	1440/1720	
Ambient temperature	°C	10 - 40	
Oil capacity	L	7~9	
Level of protection	IP54		
Intake and exhaust	G2"		
Weight	Kg	205	
Dimension (L*W*H)	m m	1035×540×434	

Flow Rate Characteristic



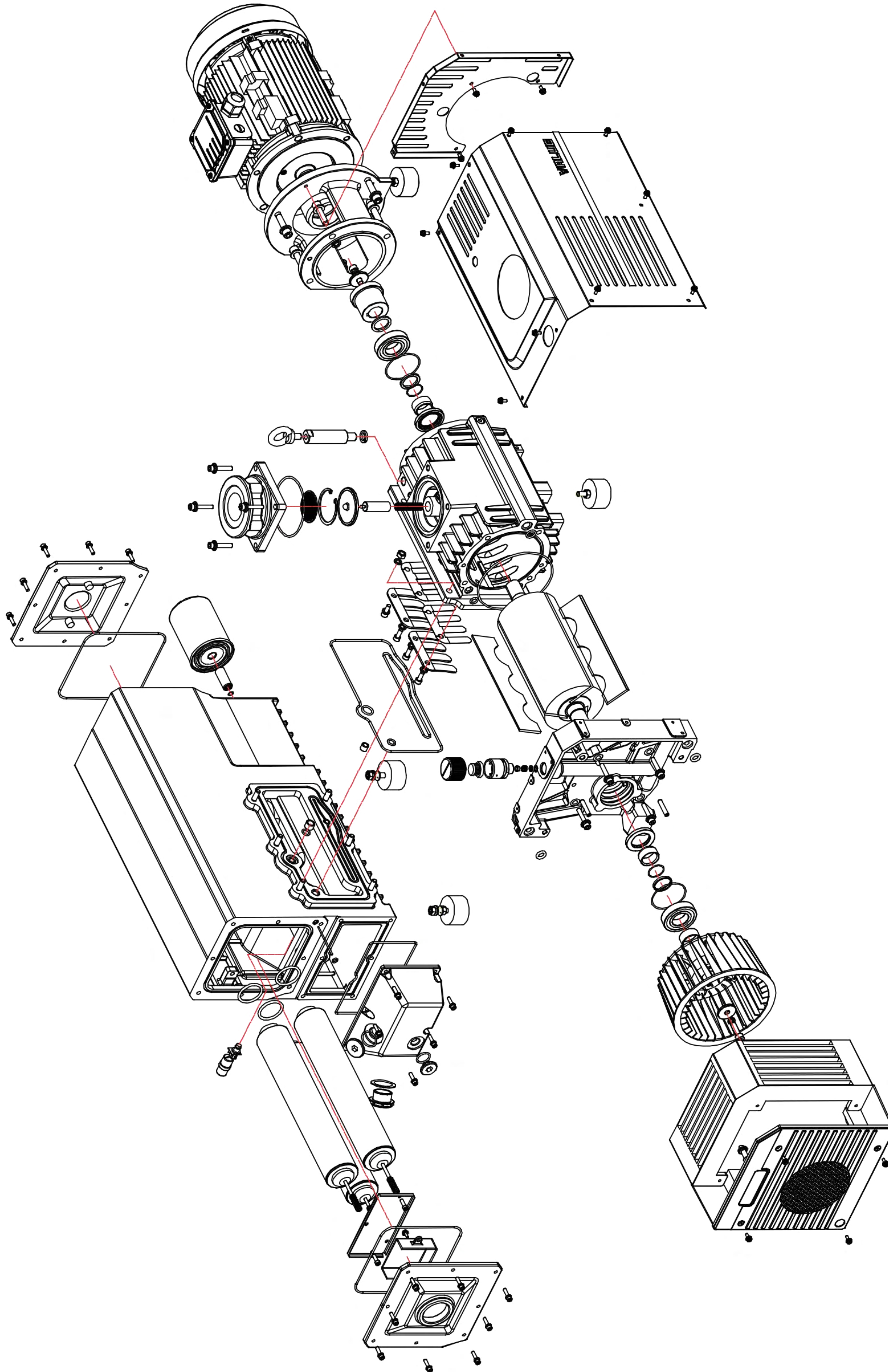
Dimension



VSV Dimensions

Model	A	B	C	D	E	F	G	H	I	J	K	L	M	N	O	P	Q	R	S	Intake port	Exhaustport
VSV-020	317	249	219	72	140	110.5	131	/	127.5	/	14	72	157	17	184	303	M8	125.8	5.3	G1/2" G3/4" /	
VSV-022/028	496	268	248	112	220	300	190	108	146	25	20	80	182	27	204	392	M6	194	35	G3/4"	G3/4"
VSV-040	555	304	268	149	215	200	235	58	179	51	5	72	203	33	252	464	M8	235	33	G1" 1/4	G1" 1/4
VSV-065	555	311	268	149	215	200	254	58	189	51	5	72	203	33	252	464	M8	242	33	G1" 1/4	G1" 1/4
VSV-100	703	406	286	165	225	225	320	131	226	42	27	91	220	61	280	578	M10	258	41	G1" 1/4	G1" 1/4
VSV-160/200	930	533	436	263	252	305	394	113	298	66	32	135	305	134	382	930	M10	394	45	G2"	G2"
VSV-300	1035	540	434	326	313	332	394	159	284	75	11	135	314	132	377	966	M10	394	45	G2"	G2"

Exploded drawing





FLO-MAX PUMPS – Your Trusted Partner in Pump Solutions

Phone: 1800 730 104

Website: flo-maxpumps.com.au

Address: Unit 5/6 Stanton Road, Seven Hills, NSW 2147